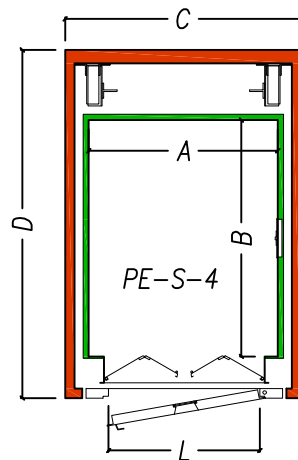
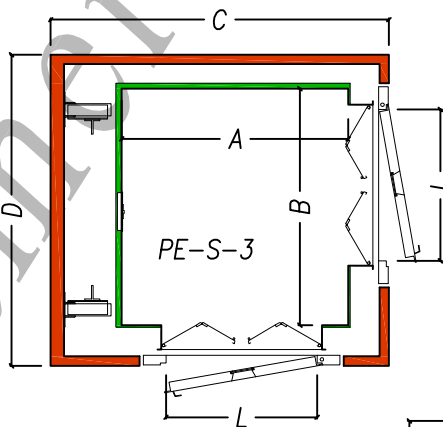
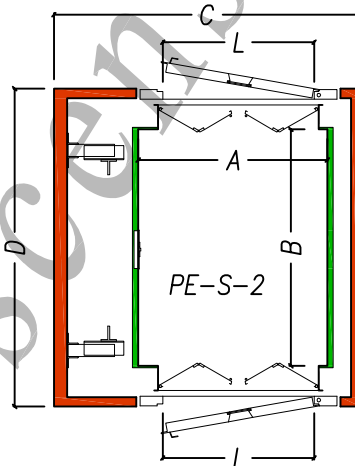
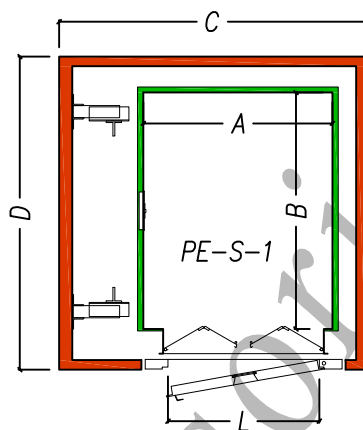
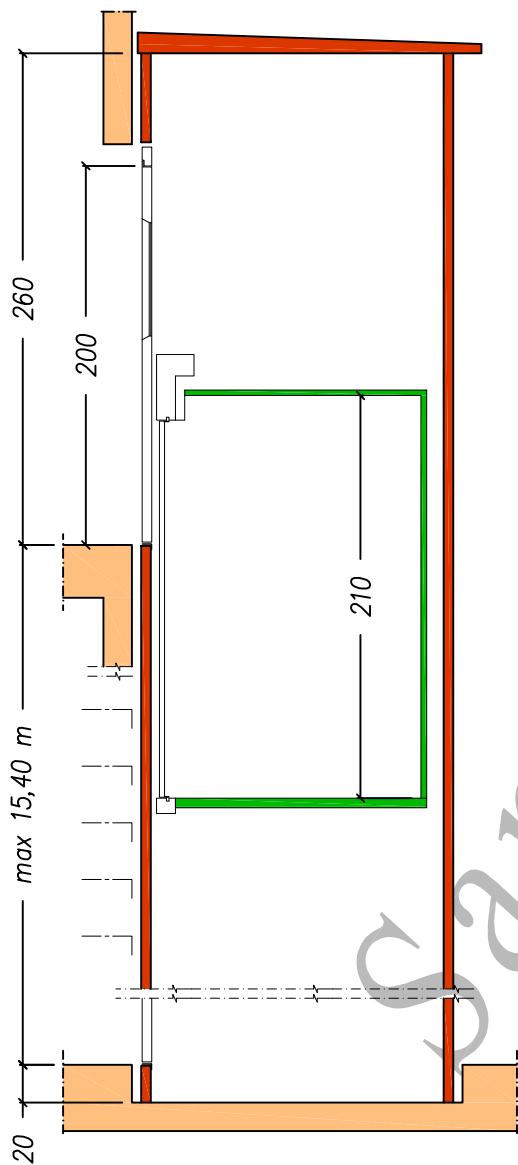




ascensori-montacarichi
SAMER S.r.l.
CORCIANO - PERUGIA

PIATTAFORMA ELEVATRICE SEMI-AUTOMATICA

SEMI AUTOMATIC VERTICAL LIFTING PLATFORM



Piattaforma elevatrice semi-automatica
Semi-automatic vertical lifting platform



Tipo Type	Portata Load kg	Capienza Capacity	A	B	C	D	L
			cm	cm	cm	cm	cm
PE-S-1.a	300	3	80	125	133	160	75
PE-S-1.b	340	3	90	140	142	174	80
PE-S-1.c	340	3	100	125	150	160	80
PE-S-2.a	305	3	80	125	132	168	75
PE-S-2.b	350	3	90	140	140	183	80
PE-S-2.c	350	3	100	125	150	168	80
PE-S-3	395	3	110	140	169	175	80
PE-S-4	340	3	100	125	126	185	80

Norme di riferimento (Reference standard): Direttiva macchine 2006/42/CE

Disegno non in scala

SAMER si riserva il diritto di modificare senza preavviso le caratteristiche e le misure dei propri prodotti

Misure comprensive
di struttura metallica

Measures including
metal structure