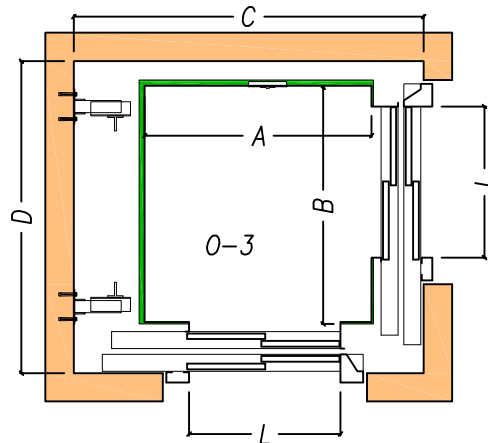
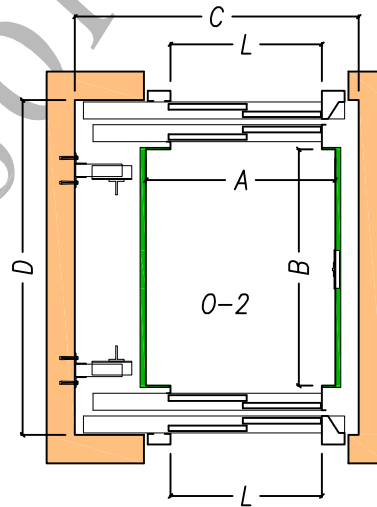
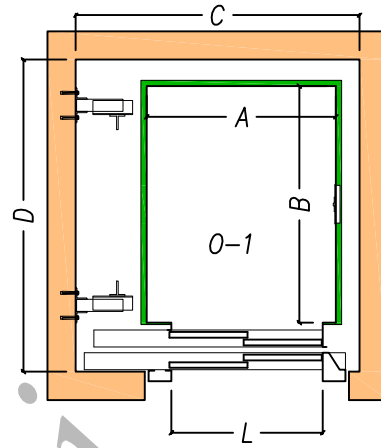
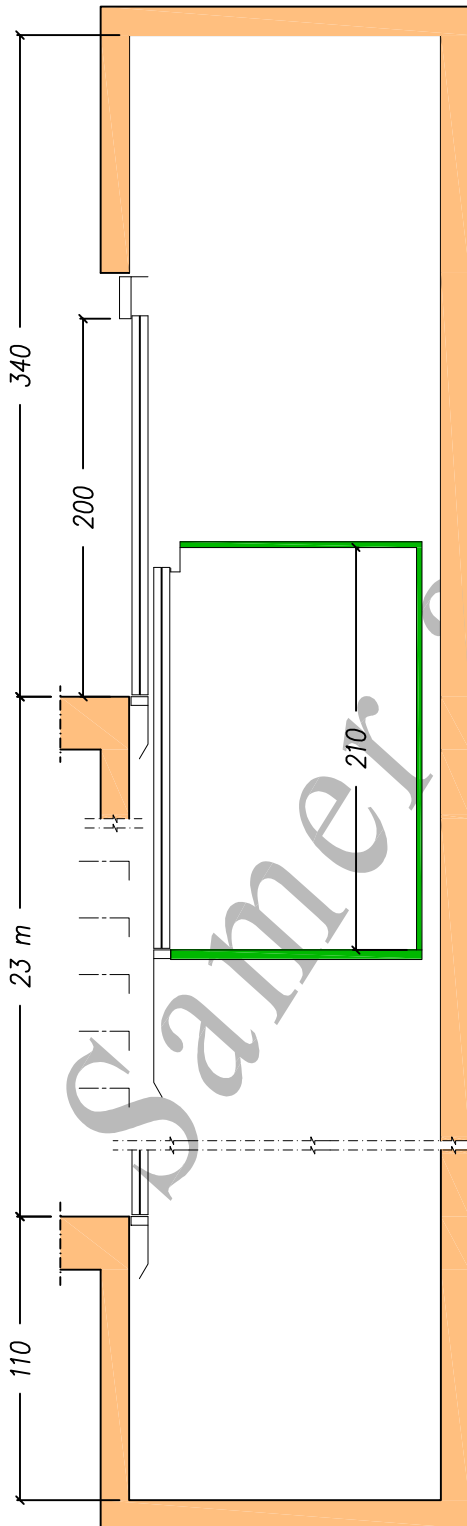




ascensori-montacarichi
 SAMER S.r.l.
 CORCIANO - PERUGIA

ASCENSORE OLEODINAMICO

Hydraulic lifts



Ascensore oleodinamico - - Dimensioni europee
 Hydraulic lift - - European dimensions

Tipo Type	Portata Load kg	Capienza Capacity	A	B	C	D	L
			cm	cm	cm	cm	cm
O-1	360	4	80	120	140	155	75
	480	6	100	125	150	160	80
	630	8	110	140	160	175	80
O-2	370	4	80	120	140	172	75
	500	6	100	125	150	177	80
	630	8	110	140	160	192	80
O-3	630	9	120	125	185	165	80

Norme di riferimento (Reference standard): Direttiva ascensori 2014/33/UE

Disegno non in scala

SAMER si riserva il diritto di modificare senza preavviso le caratteristiche e le misure dei propri prodotti